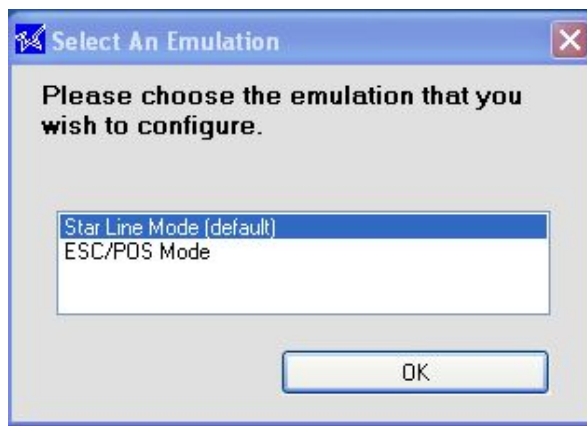


TSP100 and RETAIL HOSPITALITY (Retail Manager in ESC/POS mode)

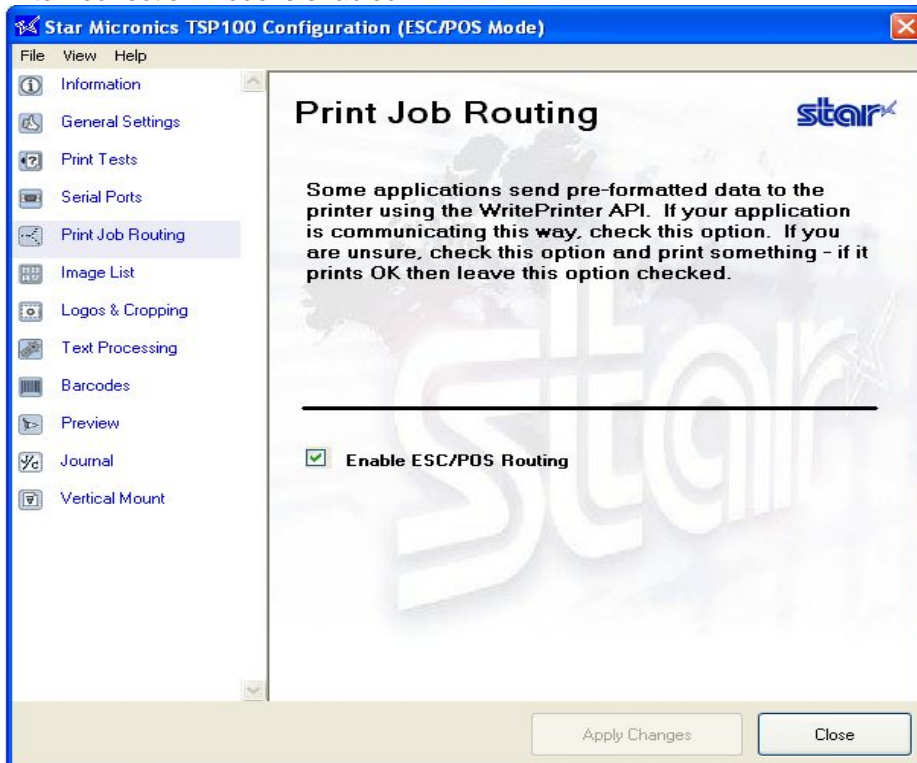
Windows 2000 and XP only.

PRINTER SETUP

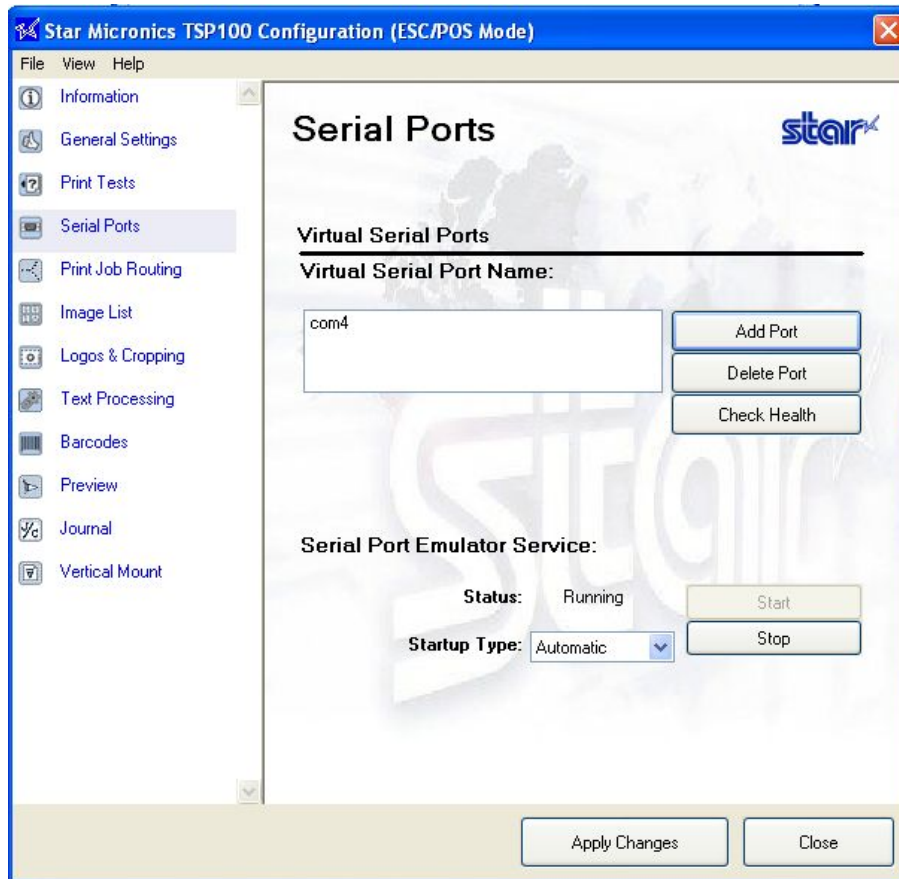
- Install the TSP100 printer software.
- Connect the printer and ensure you can print a windows test print.
- Run the configuration utility and select ESC/POS mode



- Ensure that printer redirection mode is enabled.

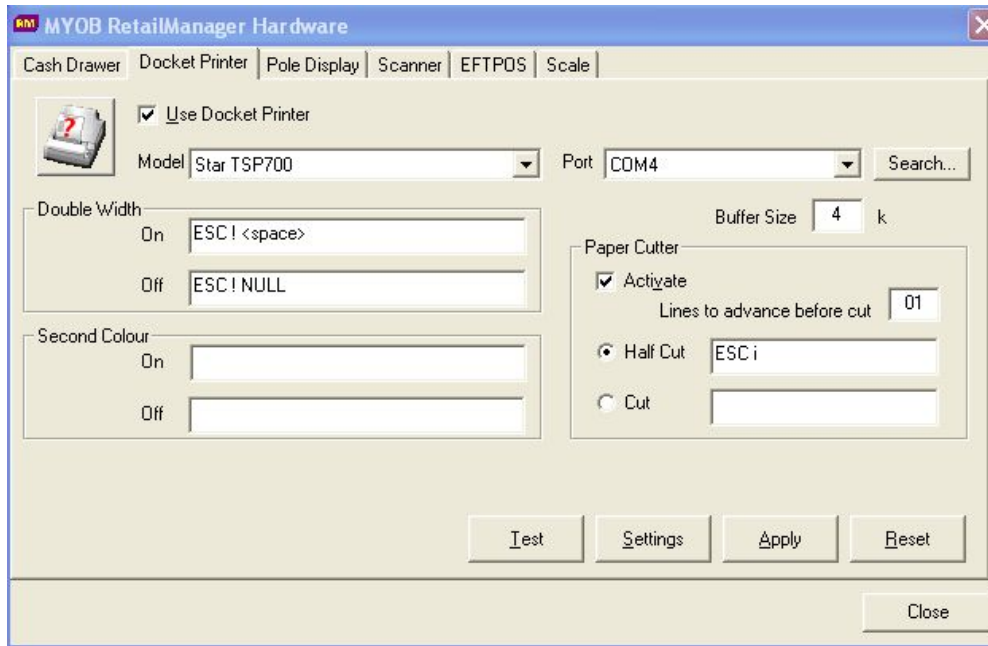


- Enable a serial port (for example com port 4)
- Make sure its set to automatic and running, you can use check health to confirm that the printer is o.k.

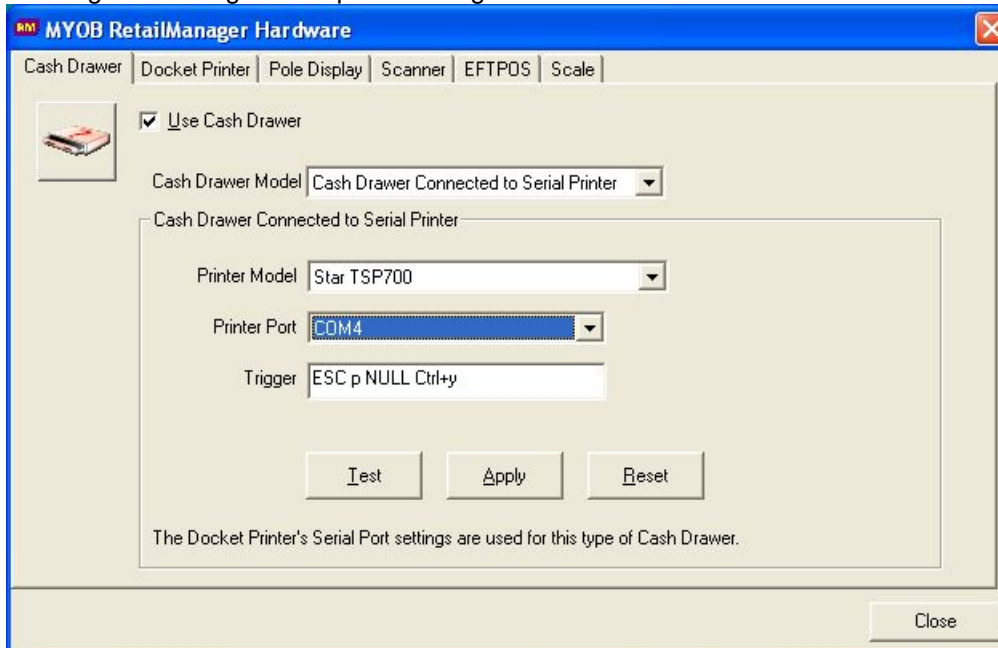


RETAIL MANAGER SETUP

- Install Retail Manager and Retail Hospitality as per MYOB's Instructions
- Click on "Setup", Click on "Hardware", Select the "Docket Printer" tab.
- Select the "Star TSP700" printer from the drop down menu.
- Ensure the settings are configured as per the image below:-



- Select the "Cash Drawer" tab.
- Ensure the settings are configured as per the image below:-



RETAIL HOSPITALITY SETUP

- Install Retail Manager and Retail Hospitality as per MYOB's Instructions.
- In the admin section ensure your hardware screen looks like this

